



## 2021 Impact Report



# Mission Statement

The Berkeley Food Network seeks to end hunger and poor nutrition by using innovative, community-centered solutions to build a more sustainable, resilient, and equitable food system.

## Values

- Community
- Sustainability
- Collaboration
- Innovation
- Equity



When we founded the Berkeley Food Network in 2016, we wanted to know how many people in Berkeley and Albany were experiencing food insecurity. A review of the data showed us that 24,000 people—one in five of our neighbors—needed help getting enough food on their tables to live active and healthy lives. We made a commitment, then and there, to become an organization that could reliably provide nutritious food to anyone in our community who needed it.

We doubled down on that commitment in March 2020 when the COVID-19 shelter-in-place order was put into place. As many of you already know, we were able to triple our work in two months to serve 5,000 people a week, thanks to the generous outpouring of support from our community. And in 2021, because of our community's ongoing support, we continued to reliably provide healthy food to a growing number of people every week, turning no one away. At the end of 2021, we were feeding over **6,000 people a week**.

With that commitment came the realization that, in order to continue to do our work into the future, we would need to build a BFN that would be sustainable, agile, and flexible enough to deal with any contingency that came our way. In 2021, we hired new staff, created better and more efficient processes for our warehouse operations, and diversified our food sourcing streams.

We also realized that, to build a truly sustainable organization, we would need to deepen our commitment to our values, centering them in all the decisions we made. We continued to build out our client-centric services, seriously addressing nutrition insecurity, providing more equitable access to desired foods, and providing dignified distributions at times and places convenient to our clients. We became involved in the circular economy by purchasing more of our food locally and supporting food businesses that use sustainable practices. We moved toward full staffing, adding well-paying jobs with benefits to our community. We honored the environment by becoming an Alameda County Certified Green Business, sourcing food from four local farms using sustainable practices, and recovering 660,000 pounds of edible excess food that would otherwise go to waste, preventing 575 metric tons of greenhouse gas emissions.

You can read more about what we accomplished in 2021 and the vision we have for moving forward in this report. We want to ensure that everyone in our community has equitable and reliable access to the healthiest food, now and well into the future.

**Sara Webber**

Co-Founder and Executive Director

**Deborah Lewis**

Board Officer, Chair

# Our Work In 2021

In 2021, your support ensured that the Berkeley Food Network was able to feed increasing numbers of our nutrition-insecure community members every week. We sourced more of the healthy foods that our clients find too expensive to buy, grew our food distribution partnerships, and began the work of building BFN into a healthy and sustainable organization, ready to meet the challenge of providing equitable access to healthy food to everyone in our community who needs it, no matter the circumstance. Learn more about how BFN grew our services last year and how we prepared for future growth.

## Sourcing Program

In 2021 we committed to diversifying our food sourcing, focusing on the types of healthy foods that our clients have difficulty accessing. We relied heavily on our robust Food Recovery Program and donations from local food producers for fresh and shelf-stable groceries as well as prepared ingredients that we use in our Hub Kitchen meals. We developed relationships with local farmers who use sustainable practices to ensure that we could reliably offer the fresh produce that nourishes our clients and, at the same time, support farming practices that nourish our local lands. And we sourced staple pantry, produce, and protein items inexpensively and at no cost from the Alameda County Community Food Bank.

### What We Did

- Sourced 1.9 million pounds of foods
- Developed relationships with four local farms that use sustainable practices to consistently provide fresh, seasonal produce to our clients.
- Collectively purchased hard-to-source items, such as cooking oil, seasonings, flour, and special holiday foods, with other food assistance organizations in our community.

### What We Learned

- Strong partnerships with local food producers and businesses are crucial to ensuring robust and consistent food sourcing for our programs.
- We have the capacity to recover enough food for our own programs and to share with other food-assistance organizations in our community.
- Many of the food assistance programs in the East Bay are excited to partner with us to source healthier, locally produced foods.

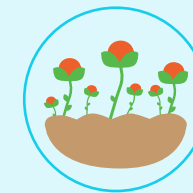
### What Comes Next

- Creating a full-time Sourcing Manager position.
- Growing our sustainable food purchasing practices and partnerships with local food producers and businesses. We will soon be receiving regular shipments of specialty Asian produce from ABIRC (Asian Business Institute and Resource Center) for our pantries.
- Becoming a food recovery broker and sharing the bulk of that food with more partners.
- Developing a collective purchasing group with other food-assistance organizations in Alameda County.



### Food Recovery

Donations from grocery stores account for a large portion of the food we recover. In 2021, we recovered 185,560 pounds of food through our partnerships with 9 local grocery stores: Berkeley Bowl, Trader Joe's, Safeway, Sprouts, Target, Middle East Market, Monterey Market, Village Market, and Market Hall. Through these partnerships we received a range of healthy foods, such as produce, meat, eggs, and prepared foods. We use this food for our own food distributions and our Hub Kitchen program. We also share a portion of it with other food-assistance organizations in our community. We will continue to expand our grocery store recovery sourcing in response to Senate Bill 1383.



### Sustainable Sourcing Program

During the summer of 2021, we sponsored a student intern at the UC Berkeley student farms in partnership with the Berkeley Food Institute. In return, we received produce from those farms. In this way we gained access to fresh locally and sustainably grown produce while, at the same time, helped those farms grow capacity and develop the farming skills of UCB students.





## Preparation Program

Once we receive food in our warehouse, our warehouse team works diligently to prepare it for distribution. Recovered food is weighed and sorted by type and useability. It is then distributed through our pantry programs and those of our community partners. It is also transformed to create our ready-to-eat, vegetarian Hub Kitchen meals and hot meals for some of our unhoused program partners, which are prepared in a nearby rented kitchen space. Purchased and donated foods are weighed, checked into our warehouse inventory system, and properly stored. We rely heavily on our dedicated volunteers to do this work.

### What We Did

- Produced 35,875 nutritious vegetarian Hub Kitchen meals in our rented kitchen space using recovered food.
- Sorted and repacked thousands of donated eggs and thousands of pounds of recovered produce. We also repackaged bulk food such as flour, coffee, rice, and polenta for distribution through our pantry programs.
- Used nearly 5,000 hours of volunteer time to prepare food for distribution, the equivalent of 2-1/2 full-time staff.

### What We Learned

- Through careful handling and storage, we can use 90% of the food we recover.
- There are a lot of talented cooks in our community and many of them are happy to volunteer in our Hub Kitchen, consistently turning recovered food into delicious, healthy meals.
- As we grew, it was important to have appropriate staffing levels and create more professional warehouse procedures in order to do our work effectively and feed more people.

### What Comes Next

- Implementing Primarius, a robust inventory system designed for food banks to track where our food comes from, what we have in stock, and where it goes.
- Moving to a bigger kitchen, allowing us to bring on more volunteers to produce more Hub Kitchen meals.
- Continuing our focus on establishing proper staffing levels and improving operational procedures in our warehouse.



### Hub Kitchen Program

In our rented kitchen space, 1/2 mile from our warehouse, our Hub Kitchen manager leverages volunteer time and expertise to produce healthy vegetarian meals using recovered food. Some of these meals are then individually packaged and frozen and distributed through our own onsite pantry, our mobile pantries, to seniors in partnership with the City of Berkeley's Aging Services Division, and to our homebound clients. We also prepare meals for our partner Dorothy Day House to be served communally at their Horizon Transitional Village.



### Warehouse Preparation

In our warehouse, volunteers assist with the receipt, storage, and preparation of the foods we source for distribution. On any given day we will have recovered eggs, produce, and prepared items to manage, along with the foods we purchase. Volunteers prepare the inventory for our on-site pantry and BFN warehouse staff prepare food orders for pickup by and delivery to our food-assistance partners and for our Mobile Pantry distributions.





## Distribution Program

In 2021, we distributed food to our nutrition-insecure community members in a number of ways, but all of them relied on our network of partners. Our model of working through partnerships with organizations that best know their clients ensured that we were able to provide access to nutritious food to everyone in our community who needs it. Based on client feedback, we offered more of the nutritious foods our clients find most unaffordable.

We distributed food through our On-site Pantry and Mobile Pantry programs, our Redistribution (RDO) Program, and our Home Delivery Program.



### Redistribution Organization Program (RDO)

Our RDO program became official in June 2021. In partnership with the Alameda County Community Food Bank (ACCFB), we were able to start offering ACCFB-sourced foods to other food-assistance organizations in Berkeley and Albany. In addition, we also provided them with recovered foods, donated foods, and collectively purchased foods. Our partners were able to shop at our warehouse or order larger amounts of food for pickup or delivery. These organizations used this food for their own pantry and prepared meal programs.

#### What We Did

- Increased the number of people we serve from 5,000 a week at the beginning of 2021 to 6,000+ a week by the end of 2021.
- Operated 39 Mobile Pantries across Berkeley and Albany. Converted 18 of our Mobile Pantry distributions from pre-packed grocery bags to farmers market style client-choice distributions, allowing clients to choose the types and amounts of foods that work best for their households.
- Added 37 new RDO partners who sourced food for their own programs through our warehouse.
- Delivered groceries and frozen meals regularly and reliably to 43 homebound clients, mainly seniors.

#### What We Learned

- Clients are less interested in the typical shelf-stable pantry foods that are inexpensive and easy for them to purchase. They need better access to more expensive healthy foods, such as high-quality protein and fresh produce.
- Mobile pantries allow us to reach food to people in Berkeley and Albany who might not otherwise be able to access the foods they need but cannot afford.
- Many food assistance programs in northern Alameda County are operating on tiny budgets and welcome access to the healthy foods they can source at no cost through our warehouse.

#### What Comes Next

- Expanding our Mobile Pantry program to reach more nutrition-insecure residents closer to where they live.
- Surveying our clients to learn more about what foods they need and the best ways to get it to them.
- Adding new RDO partners and working with all our RDO partners to increase their capacity.
- Mapping client addresses to identify areas where mobile pantries could be implemented for more accessible food distribution.



### Mobile Pantry Partners

In 2021, we partnered with the Career Technical Education (CTE) programs at Berkeley High School, Berkeley Technology Academy, and Albany High School to run mobile pantries open to the public at their school sites. Berkeley Food Network provided the food and oversight and the students ran the pantries under the supervision of their faculty and staff. In this way, the students were able to serve their nutrition-insecure neighbors and, at the same time, learn how to take responsibility for serving their neighbors in a thoughtful and reliable manner. Clients of these pantries regularly expressed their gratitude and appreciation for the kind treatment they received from the students.



# Volunteers

Our work would not be possible without our dedicated volunteers. In 2021, over 570 unique volunteers worked over 13,000 cumulative hours across all our programs. These dedicated individuals worked in our kitchen, sorted through produce, drove around Berkeley picking up and dropping off food, served our clients at our on-site and mobile pantries, and much more! We are endlessly grateful for our volunteers' generosity and their dedication to our mission. Thank you!



**570+**  
Volunteers



**13,000+**  
Volunteer hours



**6 Staff**

Volunteer hours  
equivalent to six  
full-time staff



“

A client gave me a gift during the holidays, all bundled up in fancy gift-wrapping. While it sounds like a simple gesture, it really drove home to me that the people who use our services get to know us volunteers when we come out consistently, and it's gratifying to see that we're appreciated by them for our time and efforts.

”

—Caleb H, BFN Evening Pantry Volunteer



“

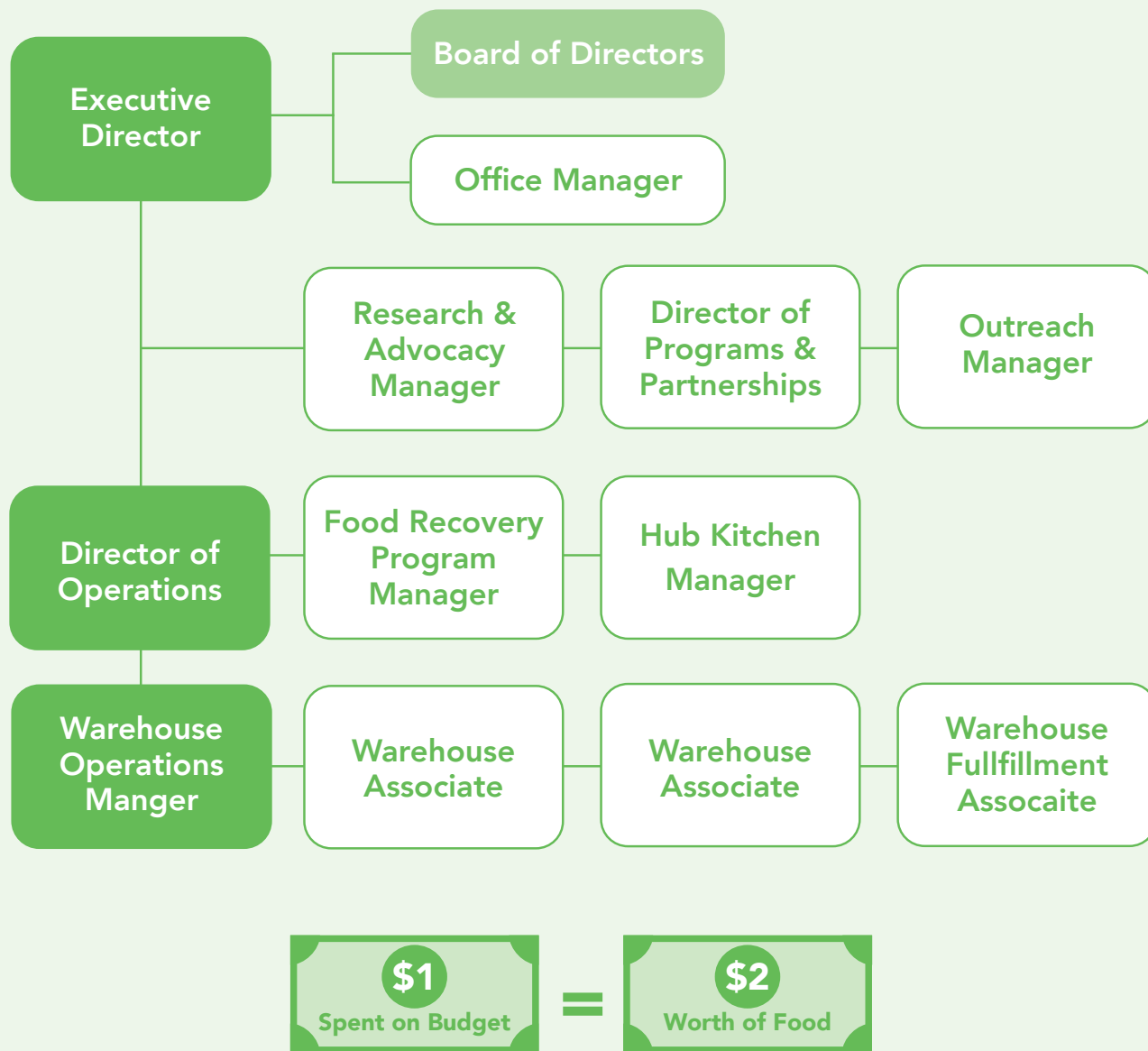
Over time as I volunteer, I find that I am deepening my own understanding about food insecurity in our community. I am always blown away by the quality, variety, and quantity of food options BFN is able to offer. We have such generous donors and SUCH an amazing, dedicated BFN staff. I always leave the warehouse feeling humbled...and tired!

”

—Annie A, BFN Volunteer

# Staff

In 2021, our staff grew from 8 to 12 employees. While our staffing costs accounted for 52% of our expenses in 2021, our larger staff helped us feed more people. Being fully staffed allowed us to source more free and low-cost food, to safely and efficiently manage that food in our warehouse, to add new distribution partnerships, and then distribute that food to over 6,000 individuals every week. We could have not done this without our amazing staff.



Investing more money into staffing allows us to source and distribute more food. Our total budget in 2021 was \$1,438,000, whereas the total value of all food secured was \$3,173,000. That means that for every \$1.00 spent on our budget, we were able to secure \$2.20 worth of food.



**Parris Williams**  
Director of Operations

Parris joined BFN in October of 2020 as our Warehouse Coordinator. She brought desperately needed warehouse experience to an organization that was growing faster than we had ever imagined we could. BFN's warehouse became calm and orderly under Parris' capable hands as she created new systems for efficiency and safety. Although professionalizing the warehouse was a monumental task, Parris not only rose to the challenge, but, in the process, ensured that BFN would thrive into the future. Today, BFN employs five full-time warehouse staff, and Parris, now our Director of Operations, oversees our Warehouse Operations Manager as well as all three Program Managers. Her exceptional skillset and experience allow her to focus simultaneously on the big picture and the nuts-and-bolts of operations, making her an indispensable asset to BFN's continued growth and service to our community.

**Grace Liao**  
Food Recovery Program Manager

Grace has been a full time employee at BFN since August 2020. Originally from the Chicago area, she was a rising senior at Carleton College in Minnesota when she first joined BFN for a summer internship in 2019. Upon graduation, she returned to California and to BFN, initially joining staff as administrative support before taking on the role of Food Recovery Manager. Under Grace's guidance, BFN's Food Recovery Program has grown its impact many times over, creating lasting ecological change and sourcing thousands of additional tons of food for our community. We're proud to announce that in 2022, Grace has been promoted to Sourcing Program Manager, sourcing not just recovered food, but also growing our Responsible Food Sourcing Program. We know she will bring the same drive and talent she shows for recovering food to our ethical and local food sourcing initiatives.

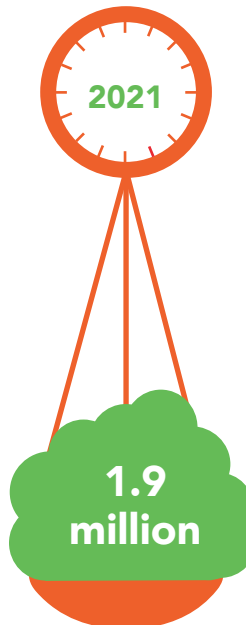
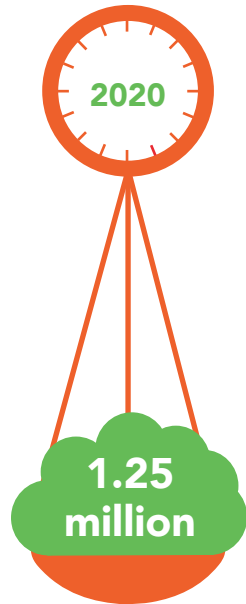


# Our Impact

## Number of People Served a Week



## Pounds of food distributed



## Value of Food Distributed



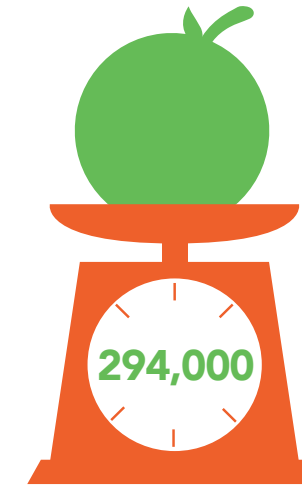
## Mobile Pantry Partnerships and Distributions



2020

2021

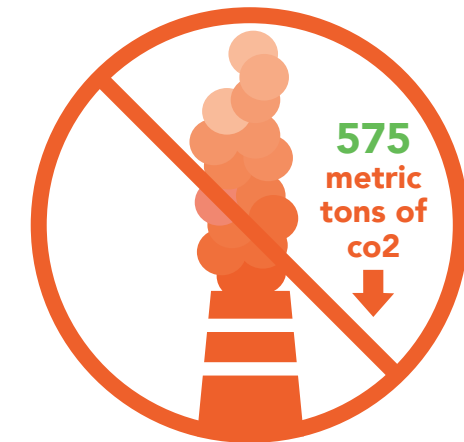
## Pounds of Food Rescued



## Number of Meals Supplied from Hub Kitchen Program



## Greenhouse Gas Emissions Prevented





# Partners



## In-Kind Donors

- Berkeley Bowl
- Bread SRSLY
- City of Berkeley
- CJ Distribution
- Cloverleaf Farm
- Cold Ice, Inc.
- Mehrdad Dokhanchy
- Food Matters Again
- Fra'Mani
- Ed Hemmat
- Highwire Coffee
- Middle East Market
- Morrell's
- Obour Foods
- Petit Pot
- Prime Roots
- Real Good Fish
- Ritual Coffee Roasters
- SJ Distributors
- Spero Foods
- Sun Powered Foods

# Financials

- Albany High School
- Bay Area Community Services
- Berkeley Adult School
- Berkeley Arts Magnet
- Berkeley City College
- Berkeley Drop In Center
- Berkeley Youth Alternatives
- Berkeley High School
- Bridge Church
- Berkeley Technology Academy
- City of Berkeley, Aging Services
- City of Berkeley, Environmental Health
- City of Berkeley, Meals on Wheels
- City of Berkeley, Nutrition Services
- City of Berkeley, Office of Emergency Services
- City of Berkeley, Public Health
- Consider the Homeless!
- Chefs to End Hunger
- Cragmont Elementary School
- Dorothy Day House
- Downtown Streets Team
- Emerson Elementary School
- Food Not Bombs, East Bay
- Foodz
- Franklin Preschool
- Gateway
- Good Shepherd Episcopal Church
- Harriet Tubman Terrace
- Help Berkeley
- Indigenous Permaculture
- John Muir Elementary School
- Kerry's Kids
- King Child Development Center
- LIFE Elder Care
- Longfellow Middle School
- Lutheran Church of the Cross
- Malcolm X Elementary school
- McGee Avenue Baptist Church
- MLK Jr Middle School
- Multicultural Institute
- North Berkeley Senior Center
- Oxford Elementary School
- POOR Magazine
- Redwood Gardens
- Rosa Parks Elementary School
- Ruth Acty Elementary School
- Satellite Affordable Housing Associates (6 sites)
- Self-Help Hunger Program
- Seneca Center
- Seva Kitchen
- South Berkeley Mutual Aid
- South Berkeley Senior Center
- Suitcase Clinic
- Sylvia Mendez Elementary School
- The Bread Project
- Thousand Oaks Elementary School
- UC Berkeley Food Pantry, Basic Needs Center
- UC Village - The Bear Pantry
- United for Health
- Unity Within the Communities
- Urban Missions
- Washington Elementary School
- Where Do We Go Berkeley?
- Willard Middle School
- YMCA Head Start (3 sites)



- 40.1% Individual Contributions
- 34.3% Non-Government Grants
- 15.2% Donated Commodities
- 6.2% Government Revenue
- 2.8% Program Revenue
- .8% Corporate Giving
- .6% Employer Match



- 38.2% Food Sourcing
- 18.6% Management
- 15.1% Food Distribution
- 9.4% Research & Advocacy
- 7.9% Hub Kitchen
- 5.1% Fundraising
- 4.0% Volunteering
- 1.7% Misc/unclassified



- 36% No-cost from ACCFB
- 33% Recovered Food
- 29% Purchased from ACCFB and other vendors
- 1% Donated Food

Account Type	12/31/21	12/31/20	% Change
Cash	\$ 615,699.3	\$602,120.72	2.3%
Fixed Assets	\$ 229,797.72	\$177,135.65	29.7%
Net Income	\$44,923.5	\$552,657.24	-92.0%
Grants Receivable	\$599,905.48	\$614,187.99	-2.4%
Public Support	\$842,248.24	\$696,261.18	20.9%
Accounts Receivable	\$5,400	\$0	100.0%
Loans	\$0	\$0	0%

“ We began working with the Berkeley Food Network in March of 2021 and have donated about 44,000 lbs of produce since then. We love working with BFN. They have great relationships with their clients. They are responsible and efficient. ”

–Carolyn Lasar, Food Recovery Coordinator at the SF Market

# Donors

## 2021 Foundation Support-Non gov't

A&P Lesbian Fund of Horizons Foundation  
 Alameda County Community Food Bank  
 Altamont EAB  
 Bay Area News Group Share the Spirit  
 Bayer Fund  
 Crescent Porter Hale Foundation  
 Kaiser East Bay Benefits Program  
 Oakland-Berkeley Association of Realtors  
 Sunlight Giving Foundation

## 2021 Government Support

CalRecycle  
 State of California COVID Relief  
 StopWaste

## Business and Corporate Donors

Amazon Smile  
 Deacon Construction  
 G&C Auto Body, Inc.  
 LaunchDarkly  
 North Berkeley Wealth Management

Perforce Foundation  
 Prins Chiropractic  
 Star Grocery

## Recovered Foods Donors

Acme Bread  
 Agni  
 Benchmark Pizza  
 Berkeley Animal Care Services  
 Berkeley Bowl Main  
 Berkeley Bowl West  
 Berkeley Humane Society  
 Berkeley Mutual Aid Gleaners  
 Blue Apron  
 Bread SRSly  
 Cheeseboard Collective  
 Clif Bar  
 Cloverleaf Farm  
 Cost Less Inventory Services  
 Daily Bowl  
 Daily Bread  
 Double Rainbow Ice Cream  
 Earl's Organic Produce  
 Ecology Center  
 Edible Schoolyard  
 Emeryville 4H  
 Firebrand Artisan Breads  
 Flik Cafe (at Bayer Campus)  
 Food Matters Again  
 Fournée Bakery  
 Fra'Mani Handcrafted Foods  
 Frog Hollow Farm  
 G & C Auto Body  
 Good Eggs  
 Green Gulch Farm

Highwire Coffee Roasters  
 Imperfect Produce  
 Kensington Farmers Market  
 La Crepe a Moi  
 La Farine — Boulangerie Patisserie  
 Market Hall  
 Merritt College Garden  
 Middle East Market  
 Mission Community Market  
 Monterey Market  
 Morell's Bread  
 Nippon Industries  
 Oakland Botanical Garden  
 Obour Foods  
 Olson Family Farms  
 Pak-N-Save  
 Passione Pizza  
 Peerless Coffee  
 Petit Pot  
 Pizza Matador  
 Prime Roots  
 Ralph Hawley Center (YMCA)  
 Rebbi  
 Replate  
 Revolution Foods  
 Ritual Coffee  
 RSV Farms  
 Safeway  
 Grand Lake Farmers Market  
 San Francisco Wholesale Produce Market  
 Semifreddi's Bakery  
 Sol Root Farmers Collective  
 Spero Foods  
 Sprouts  
 Star Meats

States Coffee x Bread  
 Sun Powered Foods  
 Sweetgreen  
 Target  
 Thistle  
 Town Kitchen  
 Trader Joe's  
 Triunfo Foods of California  
 UC Berkeley Dining Hall  
 UC Gill Tract Community Farm  
 UC Berkeley Student Farms  
 Urban Adamah  
 Urban Remedy  
 Village Market  
 Whole Foods  
 Zero Grocery

## Employer Matching Gifts

Adobe  
 Agilent  
 Anonymous Employer  
 Apple  
 Autodesk  
 Blue Shield of CA  
 Clif Bar  
 Chevron  
 Comcast  
 CSAA Insurance Group  
 Dropbox  
 Durfee Foundation  
 F5 Networks  
 Franklin Templeton  
 Fremont Group  
 Genentech  
 Google

Instacart  
 Intel  
 Kazan-McClain Partners' Foundation  
 Lam Research  
 Microsoft  
 Network for Good  
 NortonLifeLock  
 Pfizer  
 PG&E  
 Price Waterhouse  
 S&P Global  
 Salesforce  
 SiriusXM  
 Strategic Economics, Inc.  
 T-Mobile  
 VISA  
 VMware Foundation

## Religious and Community Organizations

Berkeley MLK Celebration  
 Berkeley Rotary Endowment  
 Center for Food, Faith, and Justice (at McGee Avenue Baptist Church)  
 National Residence Hall (NRHH), Golden Bear Chapter  
 St. Clement's Episcopal Church

## Individuals and Family Funds

Hilla Abel and Asaf Shor  
 Kenny Abiko  
 Anthony Acosta  
 Richard Adam  
 Sally Adams  
 Emily Ahlvin  
 Ilannah and Martin Aides-Klok

Anne Alcott  
 Alderyn Fund  
 Barbara and Carlo Alesandrini  
 Michael and Lisa Alvarez-Cohen  
 Gary Amado  
 Adele Amodeo  
 Seshadri Anantharaman  
 Rachel Anderson and Sally McCoy  
 Will Applegate  
 William and Kathy Applegate  
 Rebecca Armstrong  
 Keira Armstrong  
 Amanda Arnett  
 Aronson Foundation  
 Sam Arriola and Rene Kvidahl  
 Doris Ash  
 Niraj Asthana  
 Carrie Avery and Jon Tigar  
 Heather Ball  
 John Balmes and Sherry Katz  
 Chris Bankovitch and Catherine Stefani  
 Walter Bankovitch  
 Patrick Banta  
 Magali Barbieri  
 Dottie Barnett and Bill Kaufner  
 Ellen Barth  
 Elicia Battaglia  
 Dick Baughn and Witta Priester  
 Natasha Beery and Sandy McCoy  
 Jon and Ina Bendich  
 Lisa Bereny  
 Steve Berger and Paula Hughmanick  
 Alex and Michelle Bergtraun  
 Alison Bernstein and Judy Appel  
 Eric and Jeni Bezar

Betsy Bigelow-Teller	Amanda and Edward Chan	Narsai and Venus David	Jared Ellis	Ellen Fullman	Sim Gurewitz
Bonnie Bishop and Priscilla Camp	Kathy Chao and Danny Black	Elizabeth Davids	Nikki Ellman	Rob Gailey and Sara Brody	Marvin Gutkin
Russell Blackburn	Patricia and John Chapman	Flora and Aryeh Davidson	Diane Ely	Gwyneth and Mark Galbraith	Robin Gutkin
Susan Black	Paul and Helen Chapman	Robert Davis	Laura Enriquez	Nancy Galloway and Andy Morse	Theda Haber and Kathy Khuner
Harvey and Fran Blatter	Jacqueline Charlesworth	Edwin Davisson and Sarah Dobkin	Epstein/Roth Foundation	Christina Garcia	Caitlin Haberberger
Tawwaba Bloch	Allan Chartrand	Claire de Chazal and Francisco Santamarina	Marianna Eraklis and Daniel Robbins	April Gavin	Laura Haetzel
Andy Block	Armando Chenyek and Susan Kleinstein	Penny Dedel	Chris Ertel and Johanna Buurman	Dr. Maryl Gearhart	Ellie Hahn
Nancy Boas	Leigh Chesley	Geri Degen	Mandy Esteban	Danielle and Ethan Geier	Ben and Sandra Hamburg
Dona Boatright	Judy Chess	Suzanne Delbanco and Sachu Constantine	Peter Ewell and Helga Recke	Juliet Gelfman-Randazzo	Demaris Hammond
Victoria Bonnell	Jon Choy and Jeff Duerr	Sherry and Jack Delo	Robert Fabry and Susan Taylor	Mark Geliebter	Bonnie Hampton
Carol Bowen	Michael Choy and Shannon Moffett	Linda De Lucchi	Reyna Fa-Kaji	Genesys Food Drive 2021	Lisa Hanauer
Anne and David Boyder	Robert Choy and Jenny Tan	William and Colleen Derr	Don Falk	Irma and Scott George	Larry Hanover
Eva Bramwell	Susan and Ronald Choy	Patricia and Ted Dienstfrey	Chuck Fanning and Melinda Haag	Sean Gibson	Alex Hanson
Lauren Branfield	Miriam Ciochon	Gladys Diggs	Bill Fanning	Carleton Gillenwater	Karen Harber and Maxim Schrogin
Dona Bretherick	Betsy Cohen and Lewis Apetkar	Jean DiMaria	Debra Farb and Eric Sippel	Robert Gill	Danielle Hartzell
Anna Brock and Alexandre Makler	Diana Cohen and Bill Falik	Frances Dinkelspiel and Gary Wayne	Paul and Colleen Farrell	John Gilman	Christine Hastorf
Alex and Natalie Brody	Diana and Daniel Cohen	Gregor Dodson and Caitlin Murphy	Bev and David Farrell	Nicholas Glass and Mary Jo Bauman	Ken and Christina Hecht
Marit Brookkothlow and Enrico Casarosa	Jeannine Cohen	Irenka Dominguez-Pareto	Michael Fein and Maria David	Harold Goehring	Robin Henke
Jane Brooks	Joanne Cohn	Linda Dow and James Morgenstern	Bruce and Madeline Feingold	Bonnie Gold and David Payne	Rebecca Herman
Carol Brosgart and Joseph Gross	Fred and Joan Collignon	Kevin Doxzen	Theodore Feldsher and Sally McLaughlin	Steve and Susan Goldenberg	Jan Herzog
James Brown and Eva DeLair	Henry Cook	Ascha Drake	Erin Felter	Heidi Goldstein and Richard Thomason	Dena and Terrence Higgins
Neal and Agneta Brown	Elaine Cooper	Jill Dressner	Doug Fielding	David Golightly	David Hills
Dana Buntrock	Mark Cooper	Michael and Karen Dreyfus	Sara Fiore	Rob and Susie Goodin	Eileen and Ward Hinds
Robert Byram	Angela Coppola	Carol Drucker	Robert Fitzgerald	Maggie Goodman	Lassen Hines
Anne Campbell and Steve Tong	Chuck and Martha Wold Cornwall	Sheila Duignan and Mike Wilkins	Betsy Foster and Sean Gallagher	Katherine Gora and Matthieu Couturier	Bill Hirsch and Betsy Crabtree
Kate Campbell King and Brian King	Carol Corradi	Mikaela Dunitz and Evan Smith	William Foster	Lynn Gordon	Patrick Hitchcock
John Caner and Paul Booth	Renate Crocker	Linda Early	Catherine Fox	Amy Gorman	Gary and Jennifer Hoachlander
Laurie and Marilyn Capitelli	Maria Cruz and James Collier	Birch Early	Kathryn Frank and James Blume	Pamela and Timothy Gray	David Hodgson
Janette Cariad	Marylee Cruz	Benjamin Eastwood	Zach Franklin	David Greenbaum and Heidi Rosenfelder	Lawrence and Barbara Hohlt
The Leo J. and Celia Carlin Fund	Kit Cullinane	Bradley Efford	Joyce Franklin	Sam Greyson	Robert Holloway and Donna Asif
Gretchen Carlson	Claudia Currie-Gleason and Ed Gleason	Nancy Eichler	Jonah Frenkel	David and Marti Grubb	Karla Holmberg
Vincent Carlson	Melanie Curry and Alfonso Alvarez	Victoria Eisen and David Wampler	Jeremy Friedland	Amy Guiang	John and Barb Holzrichter
Allen Carr and Kristen Jensen	Howard Curtis and Shoji Kasegi	Rick Elefant and Diana Jacobs	Mary and Stan Friedman	Onur Gungor	Laura Horn
Mirna Cervantes	Apurva Dave and Heather Mills	Kendra Ellis and Jamie Paterson	Stephanie Friedman		Bronwen and Neil Horton
Radha Chandra			Bruce and Diane Friend		Sol Hsiang

Yute Hsu	Tae Kim	Eric Love	Susie Medak and Greg Murphy	Richard Nosek	Foundation
Susan Hubl	Woojin Kim	James Lovekin	Richard Meiss and Peter Rudy	Dorty Nowak	Lisa Ricci
Chris Hudson and Cindy Chang	Janet King and Thomas Corlett	Wendy and Brian Lukas	Luka Merker	Daniel Nube	David and Carla Riemer
Eric Hudson	Nanette and Russell King	Andy Lurie	Rob Merker	Daniel Null and Karen Williams-Null	Shari and Steve Rifas
Jane Hunter	Jessica Kmetovic and Zachary Garibay	Liza and Bobby Lutzker	Karen and Michael Meryash	Therese O'Neil	Tim Roan
Thomas Hutcheson and Frederique Wynberg	Nitin Kohli	Jimmy, Denise and Geena Lyons	Christine Meuris	Katherine Ogbum	Jane and John Robertson
Patrice Ignelzi and Bruce Smith	John and Jane Kotowski	Christine Ma and Jeremy Reiter	Elisa and Erick Mikiten	Taeko and Renee Okamura	Jane Robertson
Carmelina Ignelzi	Brian and Ashley Kozel	Pamela Maffei	Phillip and Laura Miller	Leslie Okamura	Jules Roman
Susie and Michael Iida	Liza Kramer	Thomas Magrina and Jaime Mannon	Joshua Milstein	Jaime Orozco and Sara Fain	Patrick Romani
Phyllis Isaacson	Diana Krampf	Jonathon Mah and Ana Medrano Fernandez	Linda Minor	Eddie and Amy Orton	Irene Rosenthal
Chuck and Locke Jaeger	Jackie Krentzman and Larry Munn	Gilda Malek	Sonia Mistry	W. Thomas Palmer	Donna Ross
Nate Jaffa	Jackie Krentzman and Larry Munn	Chris Mammen and Leigh Genser	Jay and Sarah Miyazaki	Luckshman Parameswaran and Karthiga Satkunanandan	Yehudit Rothman
Madeline and Bill Jay	Daniel Kroll	Michelle and William Manning	Nancy Moffett	Anne Pardee and Steve Beckendorf	Judi Rotman
Sondra Jensen	Thomas Kuhn	Helen Marcus	Mark Moore	Roz Parenti	Marion Rubin
Robert and Diana Jensen	Ron Kyle and Doris Balabanian	David Marcus	Linda Kay Moore	Joe Parisi	Julie Rubio
Harley Jensen	Carol and Danton Lambson	William Marczak and Tiffany Blaho	Jim and Dana Moran	Amy Paulsen	Tanvi Sachar
Carole Joffe and Fred Block	Llyana Landes	Stacy Mar	Sarah Morgan	Glenda Pawsey	Elizabeth Sadewwhite
Ted and Pam Johann	Amy Larson and Robert Uhlaner	Kim and Barbara Marienthal	Donna Moriguchi	Sarah Pendergrass	Harriet Sage
Diane Johengen	Deborah Launer	Risha Mars	Whitney Morris and David Fry	Alex Perlof	Leslie Sakai
Cora Johnson-Grau	Katy Lee	Bill Marthinsen	Fred Morse	Jessica Pers and Bob Stein	Janelle Salah
Andrew and Ann Johnson	Eric Leenson	Chris Martin and Petronella Van Berry	CatherineRose Mountain	Nick Peterson	Martha Salzman
Mary Reed Johnson	Robin Leong	Martha and Thomas Martin	Dennis Mulqueoney and Patricia Rossi	Sara Pierre	Suzanne Samson
Mary Katherine Johnson	Esther Lerman	Chris and Sarah Martiniak	Roberta Nakamura	Andy Pollack and Debbie Jordan	Joel Sanders and Carol Bieri
Ken Jones and Becca Ratcliffe	Catherine Lerza	Theodora Martinucci	Elania Nanopoulos	Oona Price	Drucilla Saren
Obaid Kahn	Josh and Sara Leslie	Jill and Piero Martinucci	Laurie Nash	Richard Quint	Beth Sawi
Raymond Kaliski	Peter Lester	Sarah Matsumoto	Sheryl Negrin	Karina Racz	Mark Schar
Amy Kasameyer	Ira Levine and Linda Frisch	Nanou and Teale Matteson	Sarah Nelson	Leslie Radin and Nic Leo	Scott Scheffler and Marian Wolfe
Sadako and Hiroshi Kashiwagi	Alan Levy and Diana Burden	Bonnie Mattison	Liam Newell	Andrea Ramiza	Holly Scheider
Patricia Kato and William Huff	Kris Lewett	David and Jeanmarie Mayfield	Jennifer Nickel and David Blaschke	Nancy Redekop	Jacqueline Schindler
Helena Katz	Deb Lewis and Marty Myers	Susi May	Erica Nietfeld	David Rees	Jackie Schmidt-Posner and Barry Posner
Joel Kaufmann and Susan Blake	Bill Liebman	Emily McAfee	Janet Noe	Edna and James Reiter	Alexander Braun Schoenfeld
Cynthia Kazdan-Leap and David Leap	Laurence LI	Laura McCrea	John and Mary Lee Noonan	Becky Reith	Madeleine Scott
Jay Kelekian	Andrea Linsky	Susan McKay	Tom Nordenholz and Kristin Kelly	Renaudin	Ira and Carol Serkes
Sapna Khandwala	Alfonso Lobos Ruiz	Stephanie McKown and John Brennan	David Noriega	Leslie Retallick	Randall Serrurier
Jayeon Kim	Martin and Joann Lorber	Tim McNamara	Monica Norton	The Cleaves and Mae Rhea	David Shames

Pat and Merrill Shanks  
 Leah Shellada  
 Alex Shusterman  
 Andrew Sigal  
 Samuel Silberstein  
 Randi Silverman and Alan Tafapolsky  
 Amrita Singhal and Michael Tubach  
 Elly Skarakis  
 Skoble-Schiller Family  
 Lucy and Tim Smallsreed  
 Corless Smith  
 Margaret Smith  
 Anne and Jay Smith  
 Ann Smulka and Rob Blackburn  
 Mark Sopp  
 Bruce Spath  
 Ruth and Scott Spear  
 Sriram Srinivasan  
 Traci Stanley  
 Diana Staring and Larry Hobel  
 Jenifer Steele and Arthur Ogus  
 Sally Stevens  
 Simone Stickler  
 Larry and Elizabeth Strain  
 Christina Strong  
 Judi Sui  
 Joann Sullivan  
 Tomiye Sumner  
 Peter and Pat Sussman  
 Eve Sweetser  
 Janet Tam and Kit Ratcliff  
 Deborah Tatto  
 Leslie Teicholz and Leif Haase  
 Debbie Tenenbaum  
 Alana Theriault and Chuck Desmarais

Nancy Thomas and Chris McLean  
 Susan Thompson  
 Elizabeth and Jim Thomsen  
 Garret Thunen  
 Megan and Marcus Thygeson  
 John and Mary Tibbetts  
 Sharon Tiller and Lowell Bergman  
 Carter Tomassi  
 Margie Tostado  
 Kenneth Train  
 Elsa Tranter  
 Michael and Shirley Traynor  
 Henry Trevor and Elizabeth Werter  
 Laura Truffaut  
 Alison Tucher and Charles Dyke  
 Unkown name  
 Nikki Van Ausdall  
 Catherine Varnau  
 Matteo Visconti di Oleggio  
 Kathryn and Robert Vizas  
 Amanda von Moos  
 Gail Wagner  
 Joan Wallstein  
 Washburn Charitable Fund  
 Elisabeth Watson and Nigel Blair-Johns  
 Douglas Watts  
 Sara Webber and Leif Brown  
 Annette Wegscheider  
 Gary Weimberg  
 Joanna Weinberg and David Levine  
 Kristin Weinberger  
 Carolyn Weinberger  
 Brian Weiner and Andrea Mock  
 Adam Weisberg  
 Alexander Weiss

Vita Wells  
 Jonathan Wexler  
 Bob and Lisa Whalen  
 Brad Whitaker and Maureen Sullivan  
 Dana Whitaker  
 Barbara-Sue and Lynn White  
 Colleen Whitney and David Smith  
 Noah Wiener  
 Gregory Wikler and Deborah Tellier  
 Pamela Wilder  
 Karolyn Wilhelmsen  
 Roger and Nancy Williams  
 Irit and Josh Winston  
 Marjorie Winter  
 Steve Wolan  
 Theresa Wong  
 Angie Won  
 Kathy Yang  
 Yiaway Yeh  
 Mary York  
 Kara Yount  
 Jaz Zaitlin and Mark Nienberg  
 Andrea Zeppa  
 Ellen and Irving Zucker



The relationship we've established with Berkeley Food Network has been a boon in so many ways. The most obvious being the ability to recover the volume of usable food we didn't even realize was recoverable! **Our staff is happy knowing that the food we recover is going to help those in the community that are in need**, the program raises the morale of the teams working to fill the pallets and the enthusiasm behind their efforts helps to lift spirits across the company.

In addition to the practical elements of food recovery, **our partnership with Berkeley Food Network has sparked additional conversations and new efforts to improve how we do business** and evaluate our contributions to the community. Since we started working with BFN,

- we've re-evaluated our existing solar energy systems and are looking into upgrades that will make our business more energy efficient.
- we will soon have 8 high speed charging stations (in addition to the two stations we have already) to encourage our customers to drive electric and charge while they shop.
- working with the city of Berkeley to find ways to reduce the use of plastics, by educating consumers and encouraging them to use reusable bags for produce and bulk items.

All initiatives that we'd been thinking of, but that received a big push now that we're working with BFN.

**BFN's team has been amazing as well—such a dedicated hard-working group of people—we are grateful for their partnership!**

—Chi Dixon,  
 Marketing and Communications Manager, Berkeley Bowl



## Our Board

**Deborah Lewis**  
 Chair

**Dona Boatright**  
 Co-Founder and Vice-Chair

**Rana Gidwani**  
 Treasurer

**Susan Choy**  
 Secretary

**Chuck Fanning**  
 Co-Founder and Board Member

**Kate Campbell King**  
 Co-Founder and Board Member

**Allen Carr**  
 Board Member

**Gilda Malek**  
 Board Member

**Mirna Cervantes**  
 Board Member

**Patrice Ignelzi**  
 Board Member

**Bob Whalen**  
 Board Member

This list reflects board membership for fiscal year ending December 31, 2021.



**Mailing Address**  
1569 Solano Ave, #243  
Berkeley, CA 94707

**Warehouse Address**  
1925 Ninth Street  
Berkeley, CA 94710

[berkeleyfoodnetwork.org](http://berkeleyfoodnetwork.org)



---

I admire everything about your organization and can say you are truly original with the way you get things done. The volunteers are always exceptional people who genuinely care. The food that you provide is incredible. I can't tell you how wonderful it is to have high quality groceries and fresh produce. During rain or shine, you are always there. It's more reassuring than you can imagine to have help like this available. I want to thank you so much for helping me and my family through hard times. You've been there for us.



—Anonymous Client